

# SM-608 Solar Road Pot

Road marker equipped with high grade LED lamp



1-way road



2-way road

**LED-based product, which is designed to dramatically improve road safety in difficult weather conditions.**

## Product Features

### Noticeable from long distances (over 950 feet)

The SM-608 is equipped with high grade L.E.D lamp for better brightness and visibility.

### Extremely Durable

High strength aluminum and streamline shape minimize the effect of friction and improves the SM-608 durability.

### Provides for better visibility

The SM-608 is equipped with convex lens in front of each LED of body cover. Installed on the road, it improves driving safety during fog, rainy or bad weather.

### Automatic regulation of luminosity

Equipped with automatic light sensors that regulate the luminosity. The lights are On and device is luminous in the dark, but it switches the lights Off in the brighter environment.

### Longer Battery Life

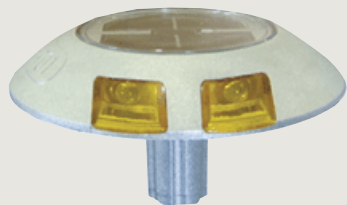
Fully charged, this SM-609 provides light for over 10 days continuously in the bad weather or rainy season.

### REED Switch

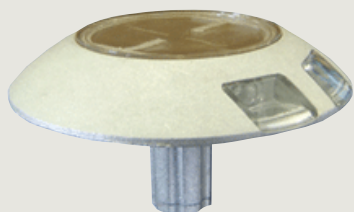
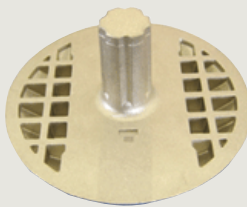
These products are equipped with a magnetic switch that disconnects the power from the LED lights. This feature provides instant illumination once the magnet is removed during installation and keeps the battery fully charged during the shipping process.

### Weatherproof

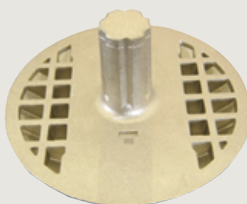
Sealed design makes SM-608 completely weatherproof.



**SM-608A**  
Double side  
(2-way)



**SM-608B**  
Single side  
(1-way)



	SM-608S - Steady	SM-608F - Flashing
<b>Size</b>	Body : 145x24mm Spike : 30x55mm	Body : 145x24mm Spike : 30x55mm
<b>L.E.D Lamp</b> (White, Red, Amber)	10 X 2,000mcd 4pcs	10 X 2,000mcd 4pcs
<b>Battery</b> 2200mA	1.2V 1ea	1.2V 1ea
<b>Solar Cell</b>	4.0Volts 70mA/hr	4.0Volts 70mA/hr
<b>LED discharge</b>	10mA/hr	5mA/hr
<b>Continuous bright time</b>	60hr (5days)	144hr (12days)
<b>Material</b>	Body:Aluminum Cap:PC	Body:Aluminum Cap:PC