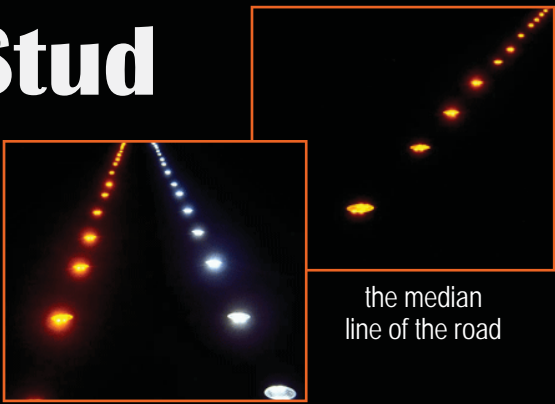


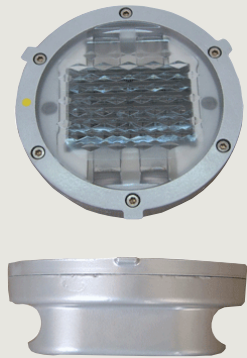
SM-609 Solar Road Stud

Road marker equipped with high grade LED lamp



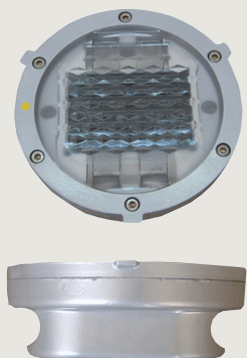
SM-609A

Double side (2-way)



SM-609B

Single side (1-way)



This LED-based device can be used on a dangerous sector of the road, a walk in the park or to designate bicycle way.

Product Features

Noticeable from long distances (over 950 feet)

The SM-609 is equipped with high grade L.E.D lamp for better brightness and visibility.

Extremely Durable

High strength aluminum minimize the effect of friction and improves the SM-609 durability. Levelled with the surface of the road, it is safe from damage like snow removal.

Provides for better visibility

The SM-609 is equipped with convex lens in front of each LED of body cover. It improves driving safety during night time, fog, rainy or bad weather. Installed on the bicycle way or walkway in the park , it provides light and creates a comfortable atmosphere.

Automatic regulation of luminosity

Equipped with automatic light sensors that regulate the luminosity. The lights are On and device is luminous in the dark, but it switches the lights Off in the brighter environment.

Longer Battery Life

Fully charged, this SM-609 provides light for over 10 days continuously in the bad weather or rainy season.

REED Switch

These products are equipped with a magnetic switch that disconnects the power from the LED lights. This feature provides instant illumination once the magnet is removed during installation and keeps the battery fully charged during the shipping process.

Weatherproof

Sealed design makes SM-609 completely weatherproof.

	Steady / 2-way	Steady / 1-way
Size	Body : 145x24mm	Body : 145x24mm
L.E.D Lamp (White, Red, Amber)	10x 2,000 mcd	10 x2,000 mcd
Battery	1.2V / 2500mA	1.2V / 2500mA
Solar Cell	2.5 Volts x250mA/hr	2.5V / 250mA
LED discharge time	10m A/hr	10m A/hr
Continuous bright time	120hr (10days)	120hr (10days)
Material	Body:Aluminum Cap:PC	Body:Aluminum Cap:PC